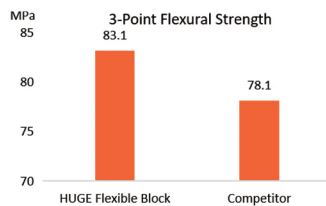


# HUGE FLEXIBLE BLOCK

Flexible blocks are made from high-interlinked and high-quality nylon materials, which is practically unbreakable and flexible. Therefore, it is suitable to fabricate the framework of partial dentures, providing a more natural and comfortable options for customers.

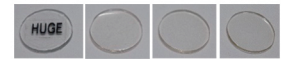
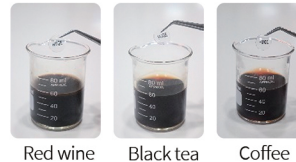
## • Practically unbreakable and crack-resistant

HUGE Flexible block has better performance on strength compared to other nylon materials. The flexible frameworks for partial dentures are generally considered to be strong and resistant to fracture or crack.



## • Stain-resistant

According to the test, nylon resin has great ability to resist stain. The sample was immersed in coffee, black tea and red wine for a period of time and no significant discoloration was observed.



After soaking in coffee, black tea and red wine at 60 °C for 100 hours, almost no color change was detected

## • Exceptional memory to hold its form

HUGE Flexible Blocks are not easily deformable. Therefore, the framework of partial denture can maintain good elasticity and accuracy, ensuring outstanding tooth retention ability after long-term use.



It fits good after 5,000 wearing and removal tests on model

## • Lightweight, comfortable and aesthetic

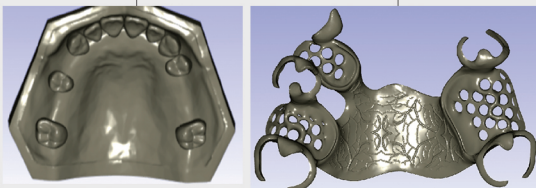
HUGE Flexible Blocks create a superior options to fabricate partial denture. The translucent and flexible materials could enhance patient wearing experience compared to metal partial dentures.



# EASY TO PROCESS – THE SAME AS CONVENTIONAL PARTIAL DENTURES

## • Scan & Design

- Scan the master model using 3D scanner
- Design the framework of the partial denture from your software.

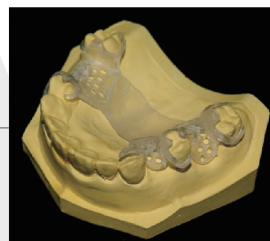


Prep Guide  
Partial Denture Framework (Minimum thickness requirements)

- Major: 1.2 mm
- Saddle Connectors Area: 0.8 mm
- Clasp on Anterior Tooth
- 3.0 mm where clasp joins framework thinning to 0.7 mm at tip
- Clasp on Posterior Tooth
- 4.0 mm where clasp joins framework thinning to 0.7 mm at tip

## • Milling

- Set the milling system according to the recommendations for PMMA.



Note:  
Preferred milling method: Wet milling  
When using dry milling method, the heat produced by the milling can cause the material to build up around the bur, Please check it regularly. If it happens, stop the milling, clean the bur and resume.

## • Add Teeth to HUGE Flexible Framework

- Arrange and **wax the denture teeth** on the framework.
- Process the partial denture **by investing, packing and curing the acrylic resin.**
- Polish the denture to ensure a smooth and comfortable fit.

