

## KAIPUS & KAIFENG Composite Teeth

Extra hard teeth made from MAC (Micro Armor Composite) combine functionality and aesthetics to meet your unique needs.

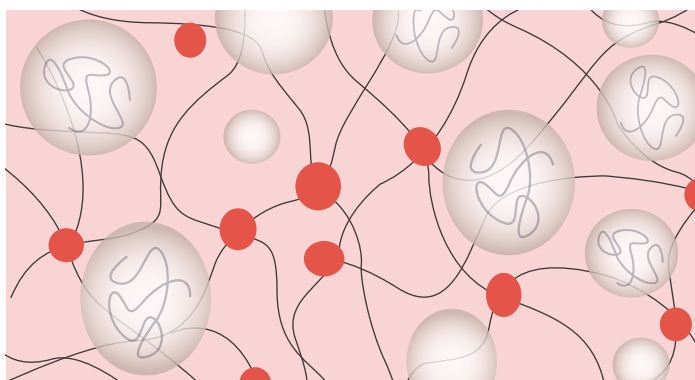
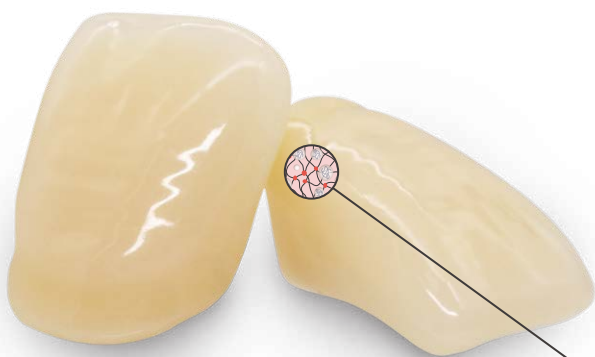
*Trail Set in A2 shades available now, contact our sales for more information!*



### Durable Multilayer Structure

#### Innovative Technology for Extra Hard Teeth

KAIPUS & KAIFENG Composite Teeth are designed for aesthetic, long-lasting and functional dentures.



#### Enamel Layer

##### Micro Armor Composite Resin

Filled with spherical filler with over 45% filling ratio, the MAC is applied to the enamel layer for aesthetics and practicality.

#### Dentin Core & Back Incisal

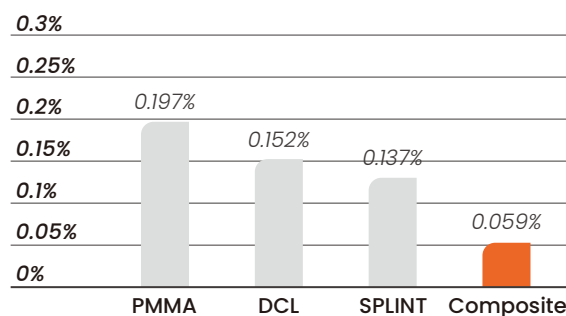
##### SPLINT Composite Resin

When applied to the dentin layer, our patented pre-polymerized SPLINT material would achieve higher structural strength and ensure chemical adhesion between teeth and denture base.

	PMMA	DCL	SPLINT	Composite* <sup>[1]</sup>
Hardness HV0.2	18	21	28	44
Compressive strength MPa	313	370	373	380
Flexural strength MPa	120	130	130	138
Modulus of elasticity MPa	2235	2346	2346	2580

#### Abrasion Resistance<sup>[2]</sup>

Weight loss rate after 60,000 cycles with resin abrasives<sup>[2]</sup>



[1] : Test Report, HUGE Dental, 2024

[2] : Third-party Test Report, 2024

## You can expect from KAIPLUS & KAIFENG Composite Teeth:

Vickers hardness over **44**, enhanced wear-resistance ✓

Choose from a wide range of molds including semi-anatomical and non-anatomical posteriors to enhance individuality ✓

Enjoy long-lasting wear resistance with reduced everyday wear and tear ✓

Designed for aesthetic appeal with optimized translucency and brightness ✓



<p><b>Composite Teeth</b> ▶</p>	<p><b>KAIPLUS</b> (EU/NA Version)</p> 	<p><b>KAIFENG</b></p> 
---------------------------------	--	---

**Overview** ▼

<p><b>Anterior Layering</b></p>	<p>4 Layers</p>	<p>2 Layers</p>
<p><b>Material</b></p>	<p>Micro Armor Composite Resin (MAC)</p>	
<p><b>Shades</b></p>	<p>16 A-D; Bleach shades available at request</p>	

**Moulds** ▼

<p><b>Anterior</b></p>	<p>12 upper 6 lower</p>	<p>15 upper 10 lower</p>
<p><b>Posterior</b></p>	<p>28° : 8 upper/8 lower 0° : 2 upper/2 lower</p>	<p>28° : 4 upper/4 lower</p>
<p><b>Tooth moulds digitally available</b> ▶</p>	<p>Yes</p>	

*\*KAIPLUS EU/NA Version applies the well-loved MAIST morphology in Europe and America and has consistent performance with existing KAIPLUS*



Shandong Huge Dental Material Corporation

Add / No.68 Shanhai Road, Donggang District, Rizhao City, Shandong Province, 276800, P.R. China.

Tel / +86 (633) 2277268 marketing@hugedental.com www.hugedental.com

- [Facebook](#) Huge Dental
- [Instagram](#) Huge Dental
- [Youtube](#) Huge Dental