

**HUGE**  
www.hugedental.com

**HUGE** Your Partner  
in Prosthetic  
Dentistry

## LAB SOLUTION

Help professionals make digital prostheses and help patients regain lovely smiles



**Shandong Huge Dental Material Corporation**

Add / No. 68 Shanhai Road, Donggang District, Rizhao City, Shandong Province,  
276800, P.R. China.

Tel / +86 (633) 2277268    marketing@hugedental.com    www.hugedental.com

Facebook Huge Dental

Instagram Huge Dental

Youtube Huge Dental



# Company Profile

HUGE Dental, Shandong Huge Dental Material Corporations, integrates R&D, manufacturing, and sales of dental products and services. Founded in 2006 in Rizhao Sandong China, as of 2021 there are three R&D centers functioning independently in Beijing, Qingdao, and Rizhao.

Implementing strict QC standards for the dental industry, HUGE Dental has passed the CE(EU), FDA(USA), MDL(Canada), ISO13485 and other quality system certifications and product registrations. Its products have been exported to nearly 100 countries/ regions all over the world.

HUGE Dental will continue to take independent innovation as the core motivity, to provide customers with integrated dental solutions. HUGE Dental has been committed to becoming one of the most influential dental medical brands in the world.

**FDA CE**

Certified

**700+**

Employees

**10,000m<sup>2</sup>**

Manufacturing and  
research plant

**100+**

Sale Countries

**50,000,000+**

Product Users



# Company History

## 2006

Established in Shandong, China

## 2006-2010

HUGE Dental was dedicated to high-quality dental material R&D, and the CAD/CAM molding center was established. 8 series of teeth with different mould design that can be applied to all races worldwide were launched.

## 2011-2016

One of the most advanced Glass Ionomer Cement material research and development laboratories in China was established. Many newer dental products such as PMMA BLOCK, Zirconia Block, Light Curing Tray, PERFIT Elastomeric Impression were launched.

## 2017-2020

HUGE R&D Center was created. Invisible Orthodontic Solution was launched. Many more new products for adhesive, direct restorations and indirect restorations are to be launched. VinciSmile Group LLC was founded in California, USA.

## 2021-2023

The manufacturing and operation center of HUGE Dental Rizhao Park has been fully built in 2022, with a total area of 31,000 square meters. The Zirconia GM-3D, Flexible Block, A-Silicone for Laboratory, Gingiva Elite Kit, Aesthetic restoration series including TrusFIL Universal Composite Restorative and Light Cure Veneer Cement, as well as Cavity Prevention solution were launched.

## 2024 till Now

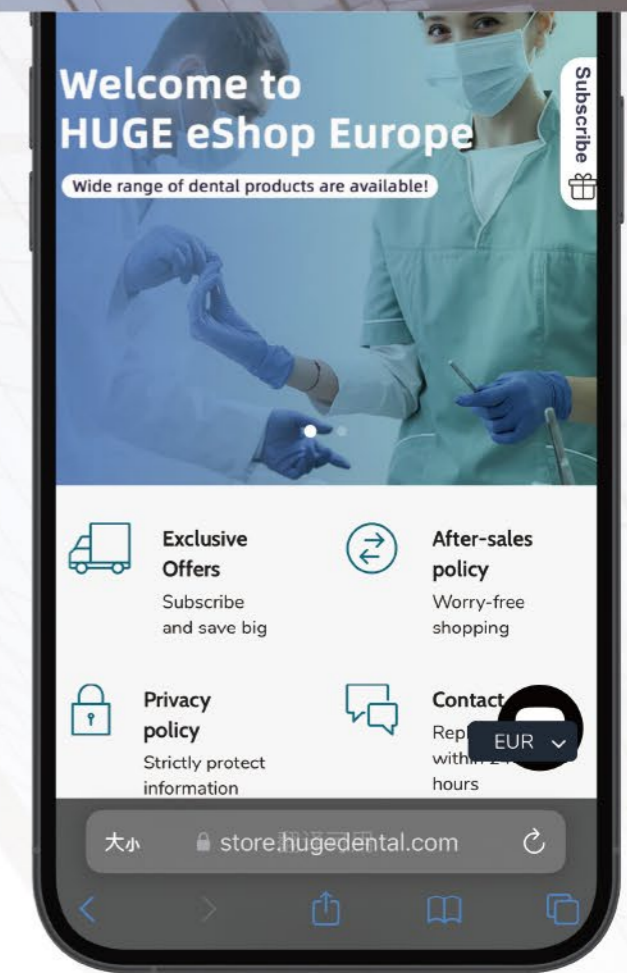
Since 2024, HUGE Dental has launched a comprehensive range of digital dental equipment, offering a one-stop solution for digital dental labs and chairside applications. Our product lineup includes: Nobil-3D Printing System, NOBILCAM-5X Milling System, MM-4D Zirconia Block, TrusFIL X-Blend Universal Composite Restorative. These cutting-edge technologies provide dental professionals with enhanced efficiency and precision in their work.

# HUGE E-shop is Live!

E-Shop Europe:

[store.hugedental.com](https://store.hugedental.com)

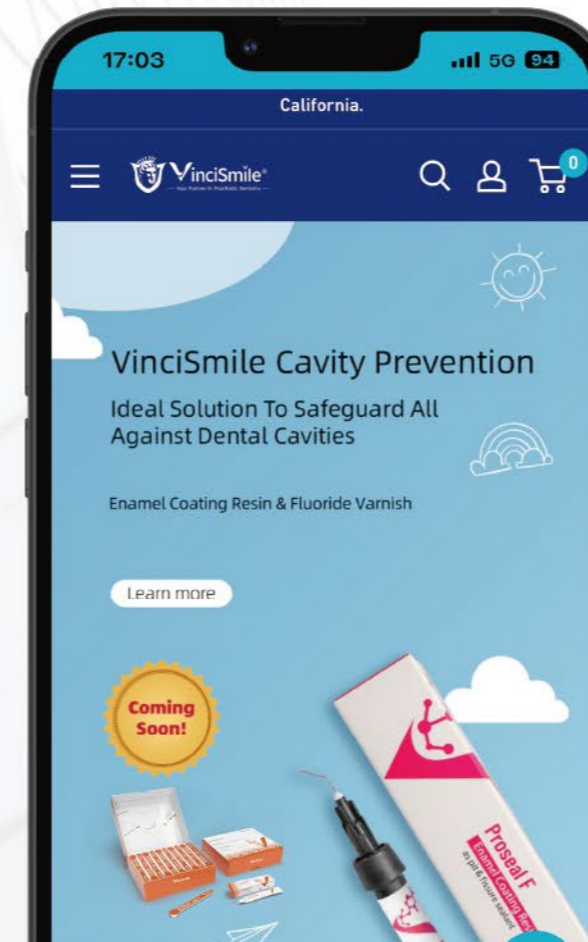
- Multi language
- Wide range of dental products
- Exclusive Offers

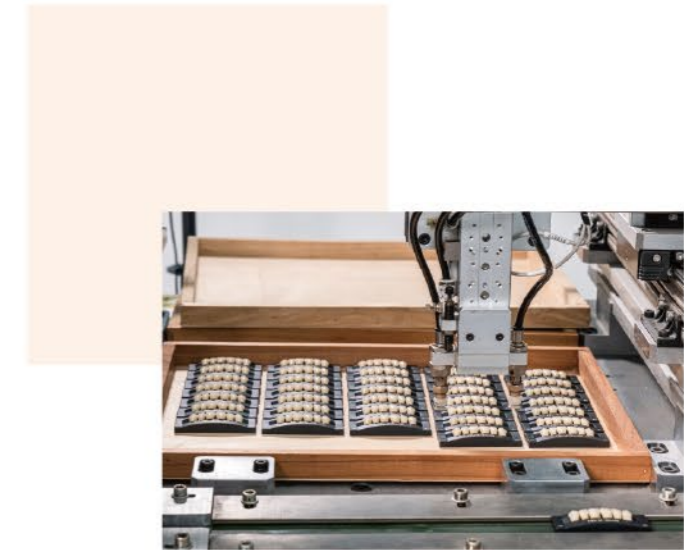


E-Shop USA & Canada:

[store.vincismile.com](https://store.vincismile.com)

- Special Offer
- Loyalty Points and Rewards
- Fast Shipping

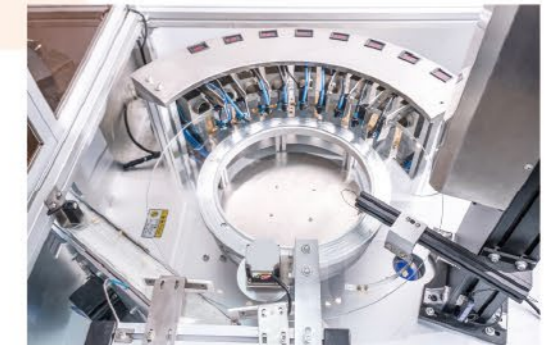
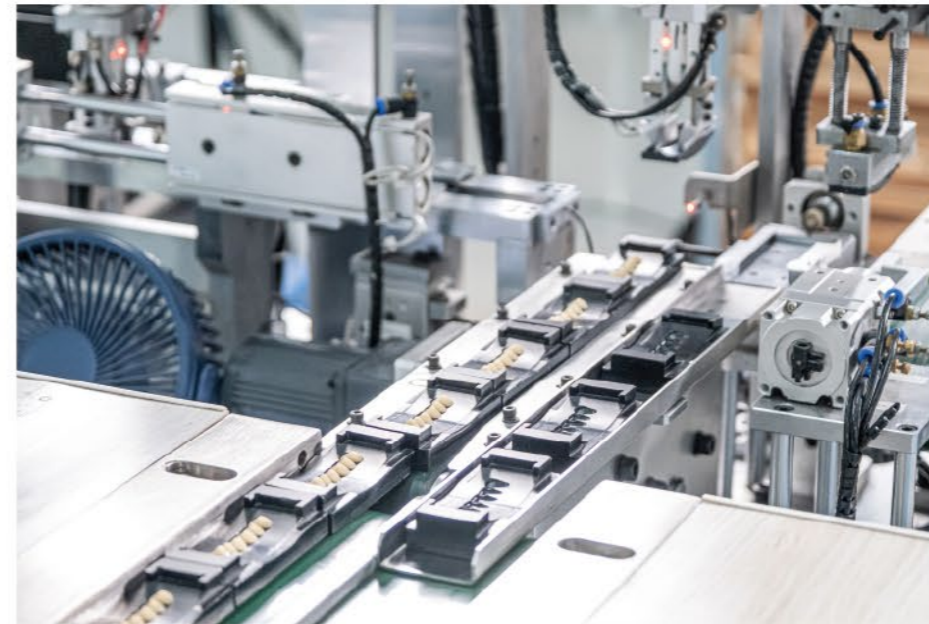




# Automated Mass Production

Production Capacity of 250, 000 Teeth Per Day and 8000,000+kg Impression Materials Annually.

HUGE Dental stands out in production capacity with its impressive, automated production machinery. Our machinery is able to achieve a mass production capacity of 250,000 teeth per day and 8,000,000 kg Impression materials annually. This production rate is three times the manual capacity. This reflects our strength and enables us to greatly improve production, as well as shorten order and delivery time to our customers.





## > Zirconia Block

· MM-4D Zirconia Block	03
· GM Zirconia Block	05
· MHT Zirconia Block	07
· HT Zirconia Block	08
· AT Zirconia Block	09
· HS Zirconia Block	10
· Premium Zirconia Block Series—100% Tosoh Material	11

## > Medical Resins

· PMMA BLOCK—More than a temporary material	15
· Multilayer PMMA BLOCK	17
· Monolayer PMMA BLOCK	18
· Clear PMMA BLOCK	19
· Pink PMMA BLOCK	20
· Full Denture PMMA BLOCK	21
· IMPAK Discs	22
· Flexible Block	23
· Casting Wax	24

## > Full CAD/CAM Dental Solution

· NOBILCAM-5X Milling Machine	27
· CAD Design Service	29
· HUGE Milling Burs	30
· NOBIL-3D Printing Machine & Material	31

Your partner in  
prosthetic dentistry

## > Synthetic Polymer Teeth

· Digital Denture Workflow with Prefabricated Teeth	35
· Digitalife	37
· MAIST & KAIFENG Composite Teeth	39
· MAIST	41
· IMPLA	43
· KAIPLUS	45
· KAIJING	47
· MAIST Three-Layer	49
· Sonning	51
· Bluebell	53
· KAILI	55
· Seniors	57

## > Denture Base Materials

· Fast Heat Curing Denture Base Polymers	61
· Traditional Heat Curing Denture Base Polymers	62
· Cold Curing Denture Base Polymers	63

## > Duplications Silicones

· Dental Implant Solution	67
· GumEasy™ A-Silicone for Gingival Mask	69
· Alphalab™ A-Silicone for Laboratory	71
· Alphalab™ C-Silicone for Laboratory	73

## > Light Curing Tray and Units

· Light Curing Tray	77
· Light Curing Unit	77



ZIRCONIA BLOCK



# MM-4D Zirconia Block

The All-in-one Solution for dental restorations

## MaxMultilayer-4D: 15 layers Zirconia!

MM-4D achieves the best that zirconia restorations have to offer; including permeability, strength, and hardness. Furthermore, 8 layers of powder showing 15 overlapping layers of gradient effects. As a result, MM-4D is the optimal product for full-arch implant-supported monolithic zirconia restorations in terms of both aesthetics and functionality.

- Natural transition: 8 layers of dental multilayer zirconia; 15 layers gradient overlay
- Translucency: 43%-57%
- Strength: 700Mpa-1200Mpa
- All areas of applications: From single crown to full arch bridge



## Ideal for esthetic crowns, bridges and full-arch restorations

With 700-1200Mpa strength and a high translucency (up to 57%) optimized for esthetic crowns, bridges and even full-arch restorations, MM-4D zirconia solves almost all of the dental applications with more confidence. It is also qualified for cases with very limited space requiring ultimate strength.

HUGE MM-4D Zirconia A2  
full-arch implant-supported monolithic zirconia bridge



Ultra translucent zirconia: up to 57% translucency for high aesthetics in incisal areas



High strength zirconia: achieve 1200Mpa strength for exceptional stability



## MaxMultilayer Structure

- 15 layers zirconia: 8 layers are superimposed and 15 layers are gradient

Flexural Strength	Translucency	Layer
≥700Mpa	High translucency	Layer 1-15%
≥750Mpa		Layer 2-10%
≥820Mpa		Layer 3-12%
≥890Mpa		Layer 4-12%
≥960Mpa	High strength	Layer 5-12%
≥1030Mpa		Layer 6-12%
≥1100Mpa		Layer 7-12%
≥1200Mpa		Layer 8-15%

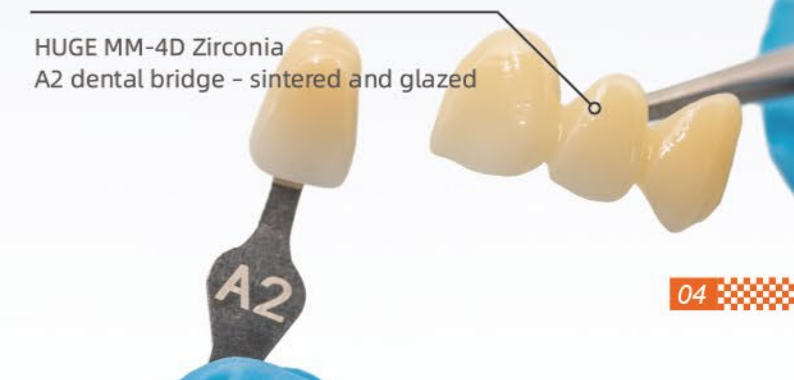


## Natural color match to VITA Classic shades

Available shades



HUGE MM-4D Zirconia A2 dental bridge - sintered and glazed



# GM Zirconia Block

Gradient Multilayer provide you the ultimate aesthetic experience

## Seamless transition in 3 dimensions:

Natural color transition matches the natural color gradient of the tooth from cervical to incisal.

Translucency from 43% incisal to 57% cervical

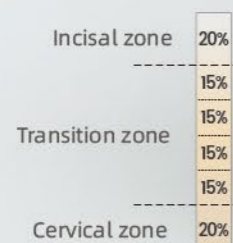
Strength gradient from 700 Mpa to greater than 1050 Mpa



5Y-Highly translucent conditioned oxide-ceramic in the incisal area



4Y-Strong conditioned oxide-ceramic in the cervical area



### 1. Outstanding filling technology

The special filling technology allows NOBILCAM GM-3D Zirconia to offer seamless transition from dentin to enamel in color, translucency and strength. The premium esthetics and exceptional strength provides a "All-in-one Solution", eliminating the needs to carry multiple materials.

### 2. Professional conditioning

To ensure outstanding accuracy of fit and no distortion, we are concerned about the shrinkage of the raw 4Y and 5Y oxide-ceramic materials. During manufacturing process, the powder conditioning adjusts the sintering kinetics and make the materials combined optimally.

### 3. High-quality manufacturing

Advanced manufacturing process improves the quality of the product. Before pre-sintering process, every zirconia blanks would be sealed into a vacuum bag and pressed isostatically, which improves the microstructure of the material.



Gradient Multilayer in 3 Dimensions: shade, strength and translucency.

Optimally combine the raw 4Y and 5Y zirconia materials, ensuring outstanding accuracy of fit after sintering.

Excellent incisal translucency improves the aesthetics of restorations.

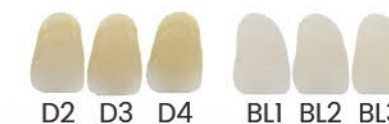
## Recommended applications

- Veneer
- Inlay & onlay
- Full anatomy crowns (anterior/posterior)
- Anatomically reduced crowns
- 3-unit bridge

## Technical Data

Flexural strength(3-point)	700-1050Mpa
Translucency	43%-57%
Coefficient of thermal expansion	$(10.5 \pm 0.5) \times 10^{-6} \text{ K}^{-1}$
Chemical solubility	$< 100 \mu\text{g} \cdot \text{cm}^{-2}$
Vickers hardness	1250 HV10

## Shades & Dimensions





# MHT Zirconia Block

## Multilayer High Translucent

- With the flexural strength of over 900MPa, virtually all types of indications can be realized.
- The nice color gradient is a perfect imitation of natural tooth.
- Simplify the staining process in dental laboratory routines.

## Recommended applications

- Veneers
- Inlays & Onlays
- Full anatomy crowns
- Anatomically reduced crowns
- 3-unit to multi-unit bridge
- 3-unit to multi-unit bridge frameworks

## Technical Data

Flexural strength(3-point)	1000Mpa
Translucency	45%
Coefficient of thermal expansion	$(10.5\pm 0.5)\times 10^{-6} K^{-1}$
Chemical solubility	$< 100\mu g\cdot cm^{-2}$
Vickers hardness	1250 HV10



# HT Zirconia Block

## High Translucent

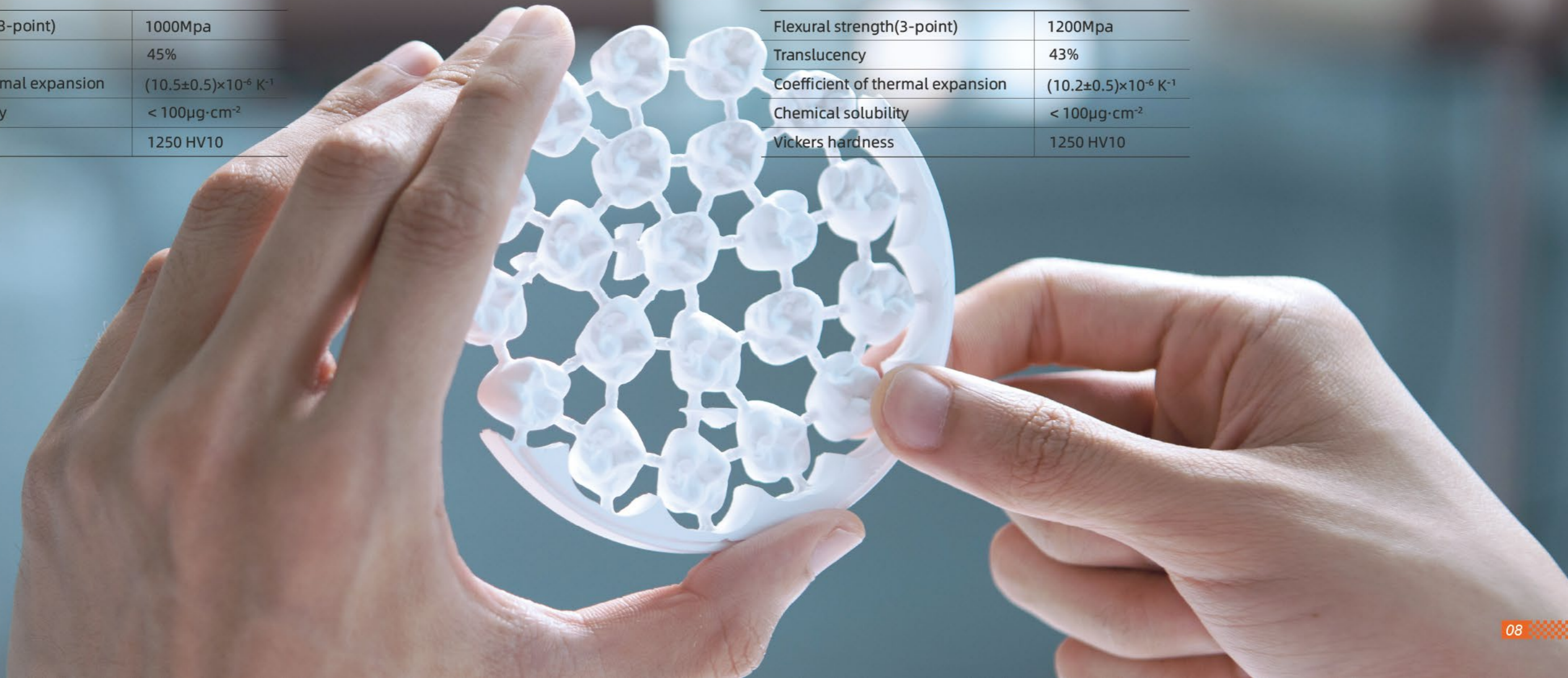
- Reproduce shades perfectly, ensuring the accuracy of color.
- Well-balanced combination of translucency and mechanical properties.
- Wide applications from crowns to bridges.

## Recommended applications

- Full anatomy crowns
- Anatomically reduced crowns
- 3-unit to multi-unit bridge
- 3-unit to multi-unit bridge frameworks
- Customized abutment
- Full-arch bridge

## Technical Data

Flexural strength(3-point)	1200Mpa
Translucency	43%
Coefficient of thermal expansion	$(10.2\pm 0.5)\times 10^{-6} K^{-1}$
Chemical solubility	$< 100\mu g\cdot cm^{-2}$
Vickers hardness	1250 HV10



# AT Zirconia Block

Anterior Translucent

- Extremely high translucent for anterior restorations.
- High aesthetics.

## Recommended applications

- Veneers
- Anterior crowns
- Anterior dental bridge (less than 3 units)

## Technical Data

Flexural strength(3-point)	600Mpa
Translucency	49%
Coefficient of thermal expansion	$(10.2\pm 0.5)\times 10^{-6} K^{-1}$
Chemical solubility	$< 100\mu g\cdot cm^{-2}$
Vickers hardness	1250 HV10



# HS Zirconia Block

High Strength

- Highest strength up to 1400Mpa.
- Good fracture resistance.
- Mills and polishes easily.

## Recommended applications

- coping & abutment
- 3-unit to multi-unit bridge
- 3-unit to multi-unit bridge framework

## Technical Data

Flexural strength(3-point)	1400Mpa
Translucency	40%
Coefficient of thermal expansion	$(10.5\pm 0.5)\times 10^{-6} K^{-1}$
Chemical solubility	$< 100\mu g\cdot cm^{-2}$
Vickers hardness	1250 HV10



# Premium Zirconia Block

100% Tosoh Material; Stable and efficient

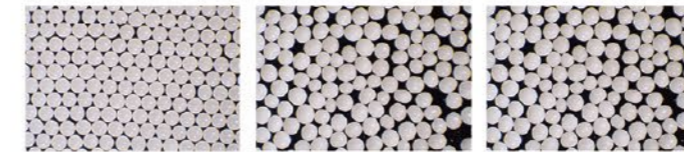


Product	HUGE HS		HUGE HT		HUGE MHT		HUGE AT		HUGE MaxMultilayered-4D MM-4D	
Sample										
Type	3Y-TZP		3Y-TZP		3Y-TZP		5Y-TZP		Incisal: 5Y-TZP Dentin: 4Y-TZP	
Bending Strength	1400Mpa		1100Mpa		1100Mpa		700Mpa		Incisal: 700Mpa Dentin: 1060Mpa	
Translucency	40%		43%		43%		49%		Incisal: 57% Dentin: 43%	
Fracture toughness [MPa·m <sup>1/2</sup> ]	≥5		≥5		≥5(Dentin)		≥3.5		≥5(Dentin)	
Shades	White A1,A2,A3,A3.5,A4 B1,B2,B3,B4 C1,C2,C3,C4 D2,D3,D4		White A1,A2,A3,A3.5,A4 B1,B2,B3,B4 C1,C2,C3,C4 D2,D3,D4		A Light, A Dark		White A1,A2,A3,A3.5,A4 B1,B2,B3,B4 C1,C2,C3,C4 D2,D3,D4		Hollywood White A1,A2,A3,A3.5,A4 B1,B2,B3,B4 C1,C2,C3,C4 D2,D3,D4,Bleach	

## 100% TOSOH Powder

- Perfect granular homogeneity

The uniformity ensures HUGE Premium Zirconia product has superior strength and the lowest fracture risk.



HUGE Premium C-1 C-2

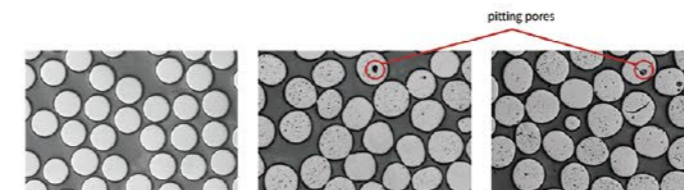
- Purity

Purity makes sure that the material is strong due to no foreign bodies being present and also that it is healthy, with no negative elements that could affect a patient's health.

<b>TOSOH</b>
ZrO <sub>2</sub> + HfO <sub>2</sub> + Y <sub>2</sub> O <sub>3</sub> + Al <sub>2</sub> O <sub>3</sub> > 99.9%
<b>C-4 Company</b>
Mg, Si, S, Cr, Cu, Zn, Sn, Pb, CaCo <sub>3</sub> , Talc, Mica

- Perfectly homogenous microstructure

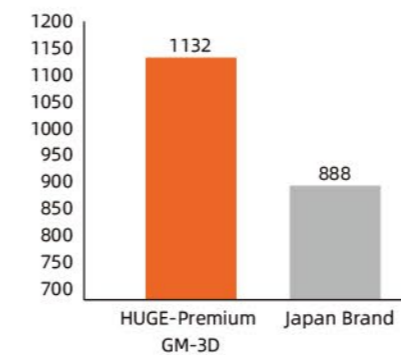
The uniformity ensures HUGE Premium Zirconia product has superior strength and the lowest fracture risk.



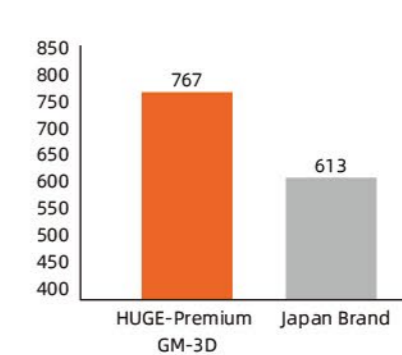
HUGE Premium C-1 C-2

## Excellent Performance in Strength Testing Compared to Competitors<sup>[1]</sup>

The 3-point flexural strength in cervical part

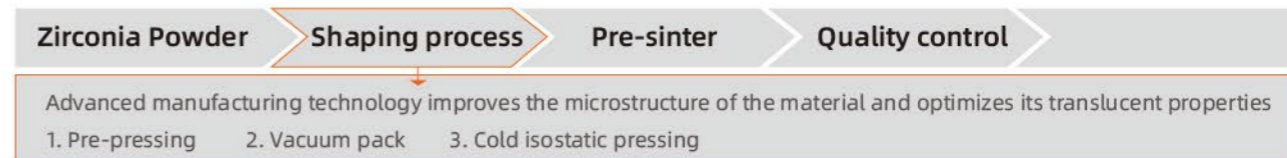


The 3-point flexural strength in incisal part



## HUGE Advanced Manufacturing Technology

- Manufactured at our in-house production site



- Diverse products in different types, shades, systems and thickness
- Comprehensive and in-depth research on sintering

[1]: Data from HUGE laboratory



MEDICAL RESINS

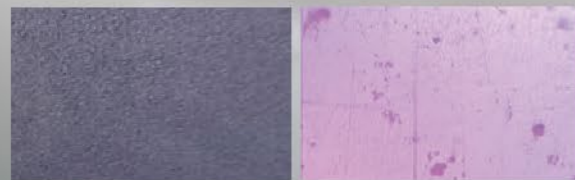
# PMMA BLOCK

More than a temporary material

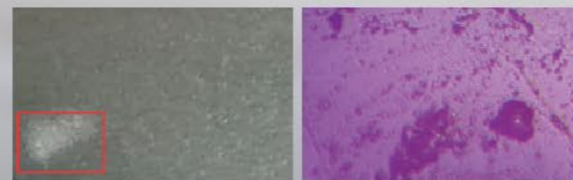
HUGE PMMA blocks are one of the best CAD/CAM PMMA products in dentistry in part due to the materials used and our mature manufacturing technology,

## Excellent compactness

According to the X-ray and optimal microscope pictures, there is no bubble or other impurities in HUGE PMMA blocks. The highly cross-linked PMMA material ensures high gloss, wear-resistance, and ability to resist stain.



HUGE PMMA



Other Competitors

## Outstanding mechanical and chemical properties

HUGE PMMA blocks would improve your effectiveness during your fabrication. The outstanding properties also make the milled prostheses (crowns, bridges, dentures, and etc) last longer.

## Technical Data

Properties	Parameter
Flexural Strength	> 120 Mpa
Modulus of Elasticity	> 2200Mpa
Water Absorption	< 20 $\mu$ g/mm <sup>3</sup>
Water solubility	< 0.8 $\mu$ g/mm <sup>3</sup>

## Comprehensive and accurate shade system

HUGE PMMA products offer 22 shades for Multilayer PMMA disc and 24 shades for Monolayer PMMA blocks, which are consistent with VITA shades guides.

## Wide range of application thanks to:

- Outstanding mechanical and chemical properties
- Proven biocompatibility
- Aesthetic translucency
- Easy to fabricate

## Recommended applications:

- Long-term temporary crown & bridge restorations(HUGE Multilayer & Monolayer)
- Dental splints for therapeutic restorations of TMJs and bruxism(HUGE Clear & Flexible)
- Digital denture & denture bases (HUGE Pink & Full Denture)
- Guide for implant surgery (HUGE Clear)

# Multilayer PMMA BLOCK

- Seamless Gradient, natural and artistic
- Easy to operate, stable and efficient, excellent biocompatibility
- Not only for temporary crowns and bridges but also for removable structures for dentures

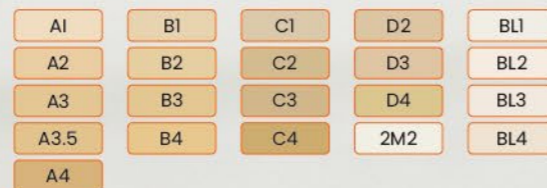
## Technical Data

Properties	Parameter
Flexural Strength	> 120 Mpa
Modulus of Elasticity	> 2200Mpa
Water Absorption	< 20µg/mm <sup>3</sup>
Water solubility	< 0.8µg/mm <sup>3</sup>



## Shades Available:

- 16A-D, 2M2, BL, BL1-4



**Thickness:** 10mm to 30mm



# Monolayer PMMA BLOCK

- Mills purely and polishes easily
- Easy to operate, stable and efficient, Excellent biocompatibility
- For long-term temporaries with a wear period up to 12 months



## Systems Available:

- Open system φ98/φ100/φ104/φ108mm, Z-System φ95mm, AG-System φ89mm

**Thickness:** 10mm to 30mm

## Technical Data

Properties	Parameter
Flexural Strength	> 120 Mpa
Modulus of Elasticity	> 2200Mpa
Water Absorption	< 20µg/mm <sup>3</sup>
Water solubility	< 0.8µg/mm <sup>3</sup>

## Shades Available:

- 16A-D, A0, B0, BL, BL1-4



# Clear PMMA BLOCK

- Crystal clear surface with outstanding translucency
- Burns out without a trace
- Dense structure and low water absorption

## Shades Available

- Pink Orange Clear Red

**Flexural Strength:** >120Mpa

## Recommend Application

- Dental night guard, Implant guide, Male mold for casting

## Technical Data

Properties	Parameter
Flexural Strength	> 120 Mpa
Modulus of Elasticity	> 2200Mpa
Water Absorption	< 20 $\mu$ g/mm <sup>3</sup>
Water solubility	< 0.8 $\mu$ g/mm <sup>3</sup>



# Pink PMMA BLOCK

- Best material for milling a denture base
- Easy to operate, stable and low water absorption, excellent biocompatibility
- For long-term temporaries with a wear period up to 12 months

## Technical Data

Properties	Parameter
Flexural Strength	> 120 Mpa
Modulus of Elasticity	> 2200Mpa
Water Absorption	< 20 $\mu$ g/mm <sup>3</sup>
Water solubility	< 0.8 $\mu$ g/mm <sup>3</sup>



## Systems Available:

- Open system  $\phi$ 98/ $\phi$ 100/ $\phi$ 104/ $\phi$ 108mm, Z-System  $\phi$ 95mm, AG-System  $\phi$ 89mm

**Thickness:** 20mm-40mm

## Shades Available

- 2S, 2ST, 3S, 3ST, Pink, Brown



# Full Denture PMMA BLOCK

- Reduce production process
- Denture Arch is stable on the denture base
- Better accuracy than hand-made full denture

**Flexural Strength:** >120Mpa

## Technical Data

Properties	Parameter
Flexural Strength	> 120 Mpa
Modulus of Elasticity	> 2200Mpa
Water Absorption	< 20µg/mm <sup>3</sup>
Water solubility	< 0.8µg/mm <sup>3</sup>

## Shades Available:

- Denture base: 2S, 2ST, 3S, 3ST, Pink, Brown
- Denture Arch: 16A-D, 2M2, BL, BL1, BL2, BL3, BL4



The suitable materials for making soft bite splints and night guard



IMPAK is a revolutionary new "soft PMMA" material with memory, which is used to manufacture occlusal splints with thermomemory effect. The IMPAK material is characterized by its thermoplastic flexibility resulting in highly precise adaption to the tooth situation. Moreover, IMPAK offers stress-free wearing comfort for the bruxing patients. The splints or night guards fabricated from the IMPAK discs could provide optimum patient comfort and are free from MMA&BPA.

The disc sizes can fit CAD/CAM requirements and simplify the manufacturing workflow. The CAD/CAM technology also ensures a safe process, since the hand mixing errors are eliminated. Besides, the industrial production process of IMPAK discs provides an exceptional material homogeneity and thereby an outstanding long-term stability.



**Soft bite splint with thermoplastic flexibility**

Fabricated from IMPAK Disc



# Flexible Block

HUGE Flexible Block is fabricated from a strong biocompatible nylon thermoplastic compound

For the production of removable partial dentures (RPD'S), invisible crystal clear frame-works, night guards, full dentures implant retained dentures, clasps, and other metal-free removable dental appliances processed by CAD/CAM milling machines.



High Tensile & Flexural Strength



Fatigue Resistance



Partial denture frameworks



Low Water Absorption



Excellent Stability



Bite splint



## Technical Parameters

Items	Technical Requirements
Tensile Strength	≥ 30Mpa
Elongation at Break	≥ 40%
Water Absorption	≤ 5%
Impact Strength	≥ 20K/m <sup>2</sup>
Flexural Strength	≥ 30Mpa
Flexural Modulus	≥1000Mpa

## Indications

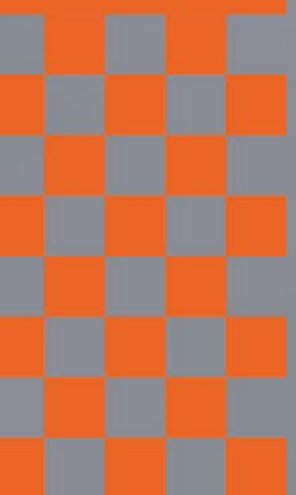
Intended for dental plates, bite plates, frame-works, clasps, personal trays, appliances, occlusal splints and night guards.

## Casting Wax

Huge provides high quality casting wax and please contact us for more details.



FULL CAD/CAM DENTAL SOLUTION



# NOBILCAM® -5X

Dry dental milling machine with 5-axis linkage, the reliable equipment for the digital future.

## Features

- 5 AXIS
- C-CLAMP HOLDER
- 90° MILLING STRATEGY
- LARGE B-AXIS ROTATION
- TIME-SAVING
- INTERRUPTION RECOVERY



## Specification

## Parameters

Number of axis	Five-axis linkage
Milling method	Dry milling
Cutting material	Zirconia block, PMMA, Wax, Resin, Composite Material
Block size	Diameter 98mm, thickness 10-30mm
Disc Stroke range	X/Y/Z:200-120-120 A:360°, B: +30°~ 90°
Spindle	0-60000rpm/500W
Drive	Full servo motor
Tool (Bur)	Quantity:10 Diameter:4mm
Dimension	Left and right: 530mm, Front and back: 650mm Up and down: 760mm
Weight	Total mass of cutting machine: 145KG
Required air pressure	6.0-6.5 bar
Compressed air flow	Approx. 50L/min
Minimum suction volume	Approx. 3000L/min
Power	800W
Power supply	220-230V AC, 50/60Hz
Milling precision	≤0.02mm





## Fits The Global Tooth Pattern

— CAD Design Service by HUGE

CAD design, an important part of the digital workflow, needs to fit both the aesthetics of the dentist's chairside and the processing needs of the dental technician.

Relying on HUGE resin tooth form research and development technology, aspiring to fit in with the tooth form design concepts of all regions of the world, homogeneous CAD design services are provided to customers, but also according to the different needs of customers, through personalised customisation to solve the client's special requirements for CAD design.

CAM design, a key step in converting a CAD design model into a toolpath that can be recognised by a CNC machine. We provide a complete CAM design solution for our customers using our equipment, which includes but is not limited to providing customers with a wealth of machining strategies and technical support to meet the different needs of customers for machining quality, efficiency and costs.

This is all based on Hyperdent software's leading core algorithms and our repeated testing of material properties and equipment parameters.



## Best Option For Milling

— HUGE Milling Burs

Our CAD/CAM milling burs are made by high-quality solid carbide, compatible with most CAD/CAM machines or systems. It is your ideal choice for milling Zirconia, Titanium, Lithium Disilicate, PMMA or other Resin materials. A wide range of types for you to select.

### ▶ ROLANO



D4.0mm 2.0/1.0/0.6/0.3mm  
Diamond Coated

### ▶ IMES-ICORE



D6.0mm 2.0/1.0/0.5mm  
Diamond Coated

### ▶ ZIRKONZAHN



D6.0mm 2.0/1.0/0.5mm  
Diamond Coated

### ▶ AMANN GIRRBACH



D6.0mm 2.0/1.0/0.5mm  
Diamond Coated

### ▶ ARUM



D6.0mm 2.0/1.0/0.5mm  
Diamond Coated

### ▶ VHF



D6.0mm 2.0/1.0/0.5mm  
Diamond Coated

\* In addition to the milling burs shown above, more types are available on request.

# NOBIL-3D DLP Dental 3D Printing Machine



## Highly stable Z-axis

Dual linear guideway design + ball screws



## ACF 3D Nano Mold Release Tech

Dramatically reduces mold pulling resistance, increasing print speed and success rate



## Automatic acrylic cover

Automatic lifting function of the acrylic cover, automatic opening when printing is completed.



## Self-developed integral light source

Uniformity of light output up to 95%, better than parallel light source



## High precision moldin

High power DLP module 2560\*1440px



## Support wireless

transmission, U disk printing, not afraid of disconnection







## >> 01 Digital Scanning





## >> 02 Select Teeth from exocad / 3shape

## >> 03 3D Printing the Denture Base Printing/Milling the Denture Base

### HUGE 3D Printing Resin for Denture Base Coming Soon

-  Biocompatible
-  Life-like Aesthetics
-  High Flexural Strength
-  Little Color Deviation

### HUGE Pink PMMA Block for Denture Base

-  Excellent biocompatibility
-  Added bionic blood filaments
-  High Flexural Strength which could reach 120Mpa
-  Excellent Polishing Performance

## >> 04 Cementing

### HUGE Synthetic Polymer Teeth for Denture Teeth



<b>9</b>	<b>221</b>	<b>2-5</b>	<b>22</b>
Series	Moulds	Layers	Shades

(16 A-D.A00.A0,BL1,BL2,BL3,BL4)

## >> 05 Your happy patient





**SYNTHETIC POLYMER TEETH**



# HUGE Digital Denture Workflow with Prefabricated Teeth

Thanks to its developed product line and rich experience in dental laboratory products, HUGE now is in the forefront of the digital dentistry and provides you perfect Digital Denture Solutions.

To fabricate digital full dentures with aesthetic appearance and elevated efficiency, you must try HUGE Digital Denture Workflow.

## What can you expect:

- Time-saving process ✓
- Aesthetic appearance ✓
- Precise result ✓
- Meet your individual needs ✓
- Deep integration with digital dentistry ✓



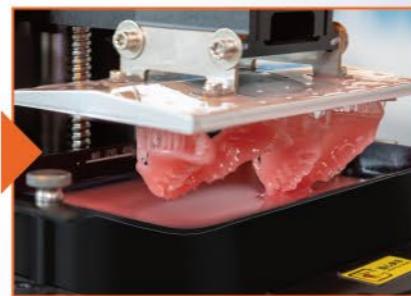
01 >> Oral Scan

i-Vinci Intraoral Scanners



02 >> CAD Process

HUGE Tooth Libraries available in 3shape and exocad



03 >> 3D Printing

NOBIL-3D Dental 3D Printer



06 << Satisfactory Result

Bring Convenient Smiles



05 << Digital Bonding

HUGE Self Curing Resin



04 << Teeth Preparation

HUGE Synthetic Polymer Teeth

### Applications

In Digitalife, we would provide you familiar teeth morphology (e.g. Sonning) from HUGE teeth lines with dedicated moulds, specialized forms and preconfigured tooth libraries for simplifying your digital denture workflow. All teeth lines in Digitalife Concept are plug and play thanks to no-grind design.

### New generation denture teeth concept for digital dentistry Good data homology for improved matching with print or engraved generated matrices

Suitable for helping cases with small vertical distance (VD)  
Reduce the inverted concave occurs in the fabrication of denture bases

### Increase accuracy

Special mold production brings stable dimensional size

### Special morphology, especially for digital denture workflow

Shorter neck, thin and flat lingual side, gentle transition at the bottom of the posteriors  
No deep cavity, reducing the inverted concave of subtractive fabrication base for better being in place



### Natural appearance with vividness

Vivid play of shape and color  
High res images available through CAD process

### Digital bonding solution

Plug and Play workflow: after mixing the self-curing resin, apply mixture to both denture base and teeth for bonding  
Time-saving bond system for bonding teeth to milled or printed denture bases  
Easy to get materials, costing less  
High bonding strength and good bonding effect

### Enhanced performance

Double cross-linked resin, higher molecular weight  
Better wear-resistance and stain-resistance than conventional PMMA



### Moulds and Shades

- 6xupper anterior moulds: O5, S4, T3, T5, T6, T9
- 5xlower anterior moulds: L5, L6, L7, L8, L11
- 6xposterior moulds: 30U, 30L, 32U, 32L, 34U, 34L
- Classical 16 A-D shades
- Bleaching shades: A0, A00

\* All HUGE teeth lines can be added to Digitalife Concept after special modification, now *Sonning* is our first to join

### SPEC

- Anterior: 6x1x16/Box (6pcs/card, 16 cards/box)
- Posterior: 8x1x12/Box (8pcs/card, 12 cards/box)
- Full set: 28x1/Box (1 full set)





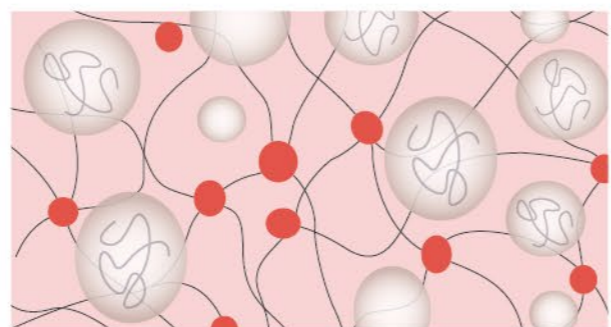
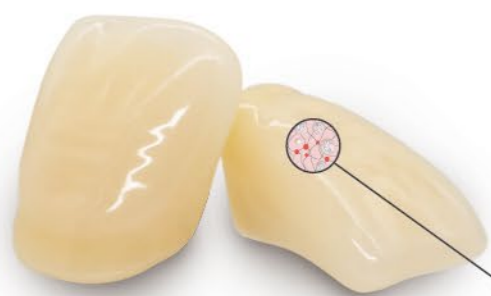
# MAIST & KAIFENG Composite Teeth

Extra hard teeth made from MAC(Micro Armor Composite) combine functionality and aesthetics to meet your unique needs

*Trail Set in A2 shades available now, contact our sales for more information!*



## Durable Multilayer Structure



### Layer I

#### Micro Armor Composite Resin

Filled with spherical filler with over 45% filling ratio, the MAC is applied to the enamel layer for aesthetics and practicality.

### Layer II & III\*

#### SPLINT Composite Resin

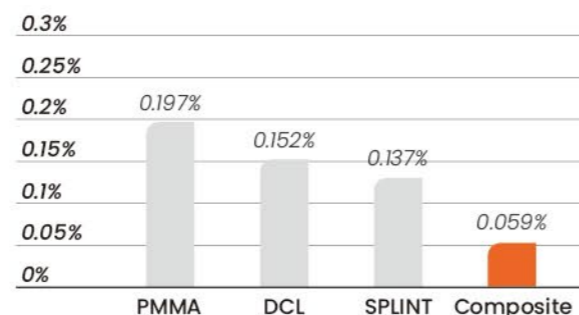
When applied to the dentin layer, our patented pre-polymerized SPLINT material would achieve higher structural strength and ensure chemical adhesion between teeth and denture base.

\*MAIST Composite Teeth have three layers while KAIFENG Composite Teeth have two-layer effect.

	PMMA	DCL	SPLINT	Composite*[1]
Hardness HV0.2	18	21	28	44
Compressive strength MPa	313	370	373	380
Flexural strength MPa	120	130	130	138
Modulus of elasticity MPa	2235	2346	2346	2580

### Abrasion Resistance [2]

Weight loss rate after 60,000 cycles with resin abrasives[2]



[1]: Test Report, HUGE Dental, 2024

[2]: Third-party Test Report, 2024

# You can expect from MAIST & KAIFENG Composite Teeth:

- Vickers hardness over **44**, enhanced wear-resistance ✓
- Choose from a wide range of molds including semi-anatomical and non-anatomical posteriors to enhance individuality ✓
- Enjoy long-lasting wear resistance with reduced everyday wear and tear ✓
- Designed for aesthetic appeal with optimized translucency and brightness ✓

	MAIST	KAIFENG
<b>Composite Teeth</b> ▶		
<b>Overview</b> ▼		
<b>Layering</b>	Anterior 3 Posterior 2	Anterior 2 Posterior 2
<b>Material</b>	Micro Armor Composite Resin (MAC)	
<b>Shades</b>	16 A-D; Bleach shades available at request	
<b>Moulds</b> ▼		
<b>Anterior</b>	12 upper 6 lower	15 upper 10 lower
<b>Posterior</b>	28° : 8 upper/8 lower 0° : 2 upper/2 lower	28° : 4 upper/4 lower
<b>Tooth moulds digitally available</b> ▶	Yes	

# MAIST

Synthetic Polymer Teeth

## Five-Layer Double Cross Linked Teeth

Natural and lively expression of shape and color.

### Applications

Making removable full or partial denture  
Making implant-supported denture

### Close to natural vividness

Rich multi-layered design concept  
Lifelike surface texture  
Shiny and translucent incisal  
Harmonious shading transition when set up teeth

### Optimized for function

Wide neck form to cover individual structural elements  
Harmonious enamel layer around to allow free custom adjustment  
Mechanical de-edging produces perfect and translucent flanks



### Concentrate on performance

Denser material structure  
Higher molecular weight  
Better wear-resistance and stain-resistance than conventional PMMA

Properties <sup>[1]</sup>	
Flexural Strength	> 125MPa
Modulus of Elasticity	> 2300MPa
Water Absorption	< 15µg/mm <sup>-3</sup>
Water Solubility	0.3µg/mm <sup>-3</sup>



### Functional occlusion

Universally adaptable for all concepts of occlusal patterns  
Easy and intuitive set-up with occlusion designed by the cogwheel principle  
Efficient set-up with precise and easy-to-find centric design  
Anatomical occlusal cusp design for 28° and non-anatomical for 0°

### Moulds and Shades

- 20xupper anterior moulds:  
S1, S2, S3, S4, S5, S6, T1, T2, T3, T4, T5, T6, T7, T8, T9, O1, O2, O3, O4, O5
- 12xlower anterior moulds:  
L1, L2, L3, L4, L5, L6, L7, L8, L9, L10, L11, L12
- 20xposterior moulds:  
28°: 30U, 30L, 32U, 32L, 34U, 34L, 36U, 36L, 30MU, 30ML, 30SU, 30SL, 32SU, 32SL, 36MU, 36ML;  
0°: Z1U, Z1L, Z2U, Z2L

### SPEC

- Anterior: 6x1x16/Box (6pcs/card, 16 cards/box)
- Posterior: 8x1x12/Box (8pcs/card, 12 cards/box)
- Full set: 28x1/Box (1 full set)

[1] : Test Report, HUGE Dental Official Laboratory, 2023

### Five-Layer Double Cross Linked Teeth

Premium teeth line specially designed for individual dentures.

#### Applications

Making removable full or partial denture  
Making implant-supported denture

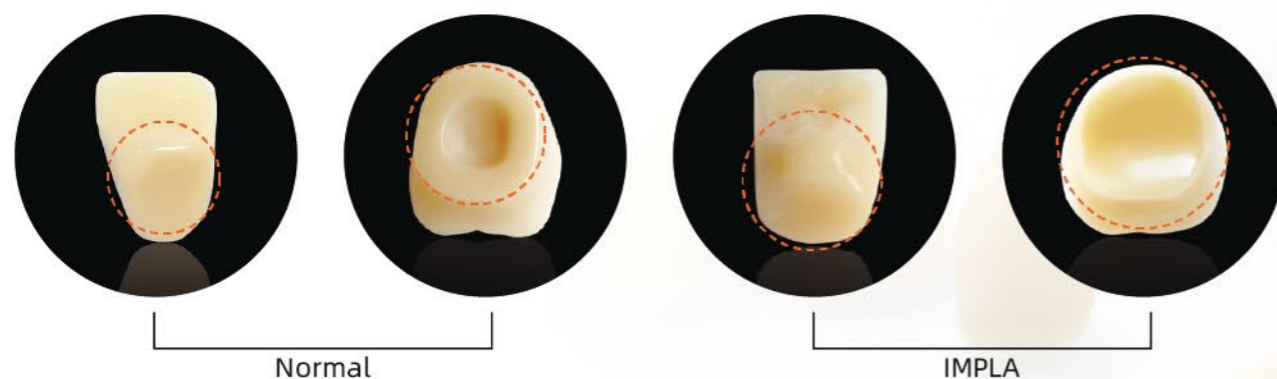
#### Impressive appearance

Perfect surface texture and characterization  
Popular shades and diverse moulds available  
Familiar tooth shapes and vivid appearance



#### Enhanced individuality and function

- Wide neck form enable easier esthetic adaptation of the prosthesis to the structure beneath
- No preparative hole on the ridgelap of posterior, makes IMPLA also compatible for individual abutment
- The anatomic shape design of posterior gives patient high chewing efficiency and easier contact between cuspids and grooved areas.



#### No compromise on quality

Made of double cross-linked resin (DCL)  
Polymer and matrix are equally cross-linked  
Higher wear resistance and compressive strength than PMMA

#### Multiple choices offering more possibilities

- 12×upper anterior moulds: S1, S2, S3, S4, T1, T2, T3, T4, O1, O2, O3, O4
- 4×lower anterior moulds: L1, L2, L3, L4
- 12×posterior moulds:  
Standard: 31U, 31L, 33U, 33L, 35U, 35L;  
Optional: 32U, 32L, 34U, 34L, 36U, 36L
- 16 A-D shades
- 6 Bleach shades available at request

#### SPEC

- Anterior: 6×1×16/Box (6pcs/card, 16 cards/box)
- Posterior: 8×1×12/Box (8pcs/card, 12 cards/box)
- 28×1×4/Box (4 sets/box)



# KAIPLUS

Extra Hard Composite Resin Teeth

## Four-Layer Composite Resin Teeth

Extra hard resin brings a nice hand feeling and higher wear resistance.

### Applications

- Making removable full or partial denture
- Making implant-supported denture

### Satisfactory aesthetic result

- Smooth and shiny surface after been re-polished
- Four layers lifelike anterior with internal mamelons' design
- Tapering, Combination and Short Square of different sizes for choice
- Shades similar to well-known popular composite teeth



### Multiple choices offering more possibilities

- 9xupper anterior moulds: T4, T5, T6, C4, C5, C6, SS4, SS5, SS6
- 9xlower anterior moulds: T4, T5, T6, C4, C5, C6, SS4, SS5, SS6
- 6xposterior moulds: 28U, 28L, 30U, 30L, 32U, 32L
- 16 A-D shades

### SPEC

- Anterior: 6x1x16/Box (6pcs/card, 16 cards/box)
- Posterior: 8x1x12/Box (8pcs/card, 12 cards/box)

## Remarkable quality standards

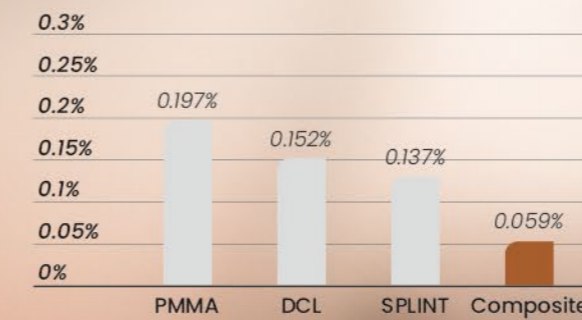
High grinding resistance  
Excellent performance in grinding resistance and stain-resistance  
Hardness over 40HV0.2V

	PMMA	DCL	SPLINT	Comp- osite <sup>[1]</sup>
Hardness HV0.2	18	21	28	44
Compressive strength MPa	313	370	373	380
Flexural strength MPa	120	130	130	138
Modulus of elasticity MPa	2235	2346	2346	2580



### Abrasion Resistance<sup>[2]</sup>

Weight loss rate after 60,000 cycles with resin abrasives<sup>[2]</sup>



[1]: Test Report, HUGE Dental, 2024

[2]: Third-party Test Report, 2024

## Four-Layer Patented Splint Resin Teeth

Premium hard teeth line designed according to Asian tooth shape.

### Applications

Making removable full or partial denture

### Overall natural beauty

4 layers color rendering with life-like moulds  
Keep crystal clear after grinding and polishing  
Various moulds catering for Asian face shapes

### Multiple choices meet your needs

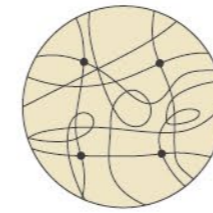
- 10×upper anterior moulds: SS1, SS2, SS3, SS4, T2, T3, C1, C2, C3, C4
- 10×lower anterior moulds: SS1, SS2, SS3, SS4, T2, T3, C1, C2, C3, C4
- 6×posterior moulds: 28SU, 28SL, 30MU, 30ML, 32MU, 32ML
- Popular international shades: A2, A3, A3.5



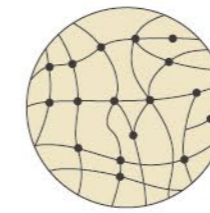
### Proven material and impressive performance

Good stain resistance  
Keep crystal clear after grinding and polishing  
Hard resin teeth with good wear-resistance  
Extra hard teeth integrate patented pre-polymerized Splint\* filings renowned for superior bonding strength compared to conventional composite resin

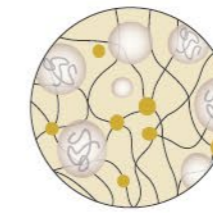
\*Splint combines PMMA monomer with micro-diameter filler to achieve higher structural strength than conventional PMMA structure.



PMMA Polymer

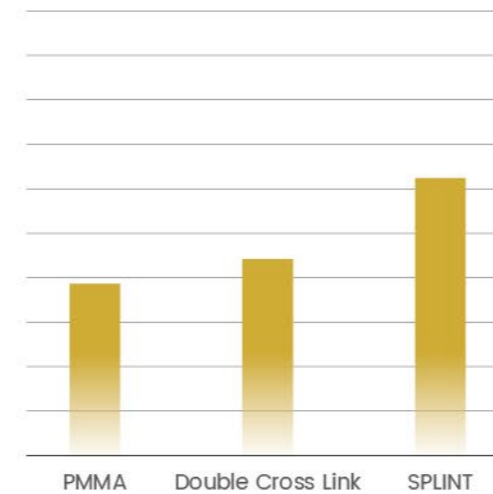


DCL Polymer

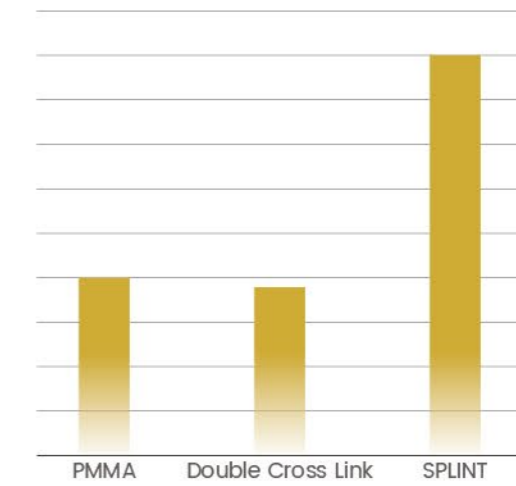


SPLINT

### Vickers Hardness<sup>[1]</sup>



### Wear Resistance<sup>[2]</sup>



### Better stain resistance, easier daily maintenance

#### SPEC

- Anterior: 6×16/Box (6pcs/card, 16 cards/box)
- Posterior: 8×12/Box (8pcs/card, 12 cards/box)
- Full set: 28×1/Box



[1][2] : Test Report from Third-Party Agency, 2024

# MAIST

★★★ Synthetic Polymer Teeth

## Three-Layer Double Cross Linked Teeth

Same shapes as premium MAIST teeth line, simplified production process but more affordable.

### Applications

Making removable full or partial denture  
Making implant-supported denture



### Close to natural vividness

Three-layer appearance  
Lifelike surface texture  
Shiny and translucent incisal  
Harmonious shading transition when set up teeth

### Optimized for function

Wide neck form to cover individual structural elements  
Harmonious enamel layer around to allow free custom adjustment  
Mechanical de-edging produces perfect and translucent flanks

### Functional occlusion

Universally adaptable for all concepts of occlusal patterns  
Easy and intuitive set-up with occlusion designed by the cogwheel principle  
Efficient set-up with precise and easy-to-find centric design

## Concentrate on performance

Denser material structure  
Higher molecular weight  
Better wear-resistance and stain-resistance than conventional PMMA

### Moulds and shades

- 12×upper anterior moulds: S1, S2, S3, S4, T1, T2, T3, T4, O1, O2, O3, O4
- 6×lower anterior moulds: L1, L2, L3, L4, L5, L6
- 8×posterior moulds: 30U, 30L, 32U, 32L, 34U, 34L, 36U, 36L
- Classical 16 A-D shades

### SPEC

- Anterior: 6×1×16/Box (6pcs/card, 16 cards/box)
- Posterior: 8×1×12/Box (8pcs/card, 12 cards/box)
- Full set: 28×1/Box (1 full set)



## Three-Layer Double Cross Linked Teeth

Well-loved teeth line with large moulds selection.

### Applications

Making removable full or partial denture

### Aesthetically pleasing appearance

Classic three-layer design effect  
 Natural and clear texture on each side  
 Shiny and smooth enamel surface  
 Popular square, tapering and ovoid shape

### Functional basis

Multi-functionally designed occlusal plane, suitable for common occlusions  
 Concave ridge lap design, better bonding strength to the denture base  
 Anatomical forms of cusp angle of 28°, offering higher chewing efficiency

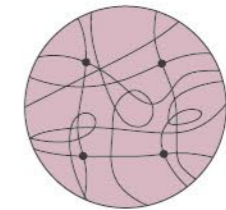


### Moulds and shades

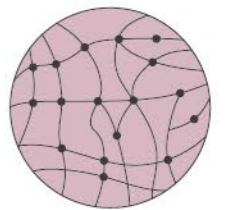
- 15xupper anterior moulds:  
S2, S3, S4, S5, T1, T3, T4, T5, T6, T7, T9, T11, T12, O5, O8
- 10xlower anterior moulds:  
L1, L2, L3, L4, L5, L6, L7, L8, L11, L14
- 8xposterior moulds:  
30U, 30L, 32U, 32L, 34U, 34L, 36U, 36L
- 16 A-D shades
- 2 Bleach shades

### Performance Features

All layers are made from highly cross-linked material (DCL)  
 More extensive network of bonds  
 Better wear-resistance and stain-resistance than PMMA  
 High flexural strength produces hard but not brittle teeth

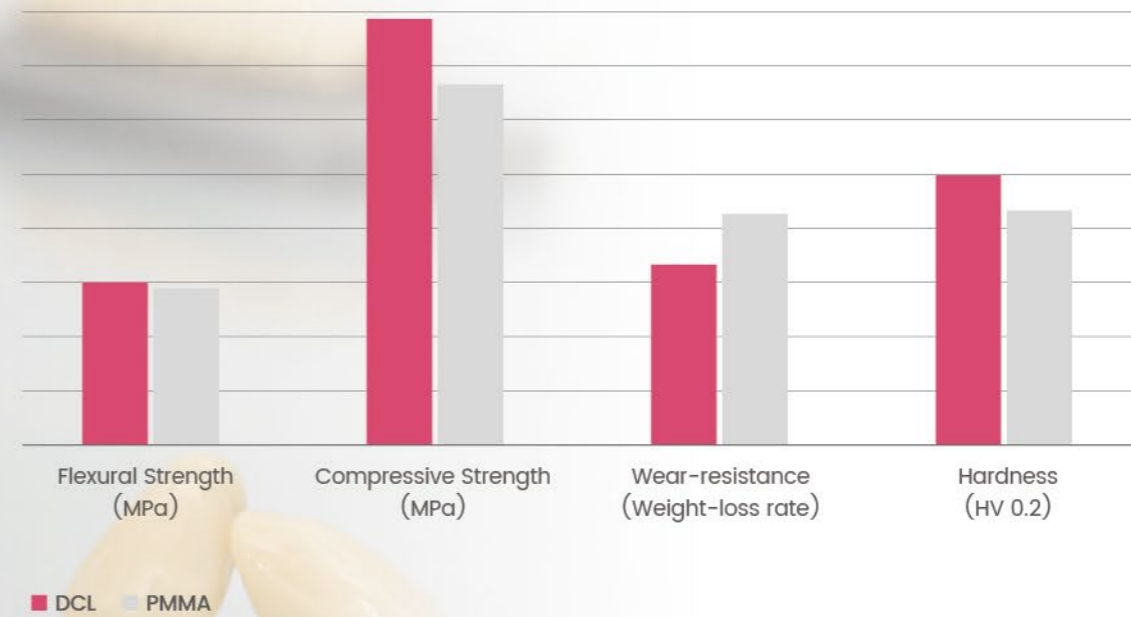


PMMA Polymer



DCL Polymer

### Performance of DCL Material<sup>[1]</sup>



### SPEC

- Anterior: 6x1x16/Box (6pcs/card, 16 cards/box)
- Posterior: 8x1x12/Box (8pcs/card, 12 cards/box)
- Full set: 28x1/Box
- 28x1x4/Box (4 sets/box)

[1]: Test Report, HUGE Dental Official Laboratory, 2024

## Two-Layer Double Cross Linked Teeth

Popular teeth line provides reliable quality and multi-functional shapes.

### Applications

Making removable full or partial denture

### Classic design brings natural beauty

Two-layer design with lifelike effects  
Familiar moulds elevate work efficiency  
Patented no wax tooth card, easy to use

### Functional and multiple solutions

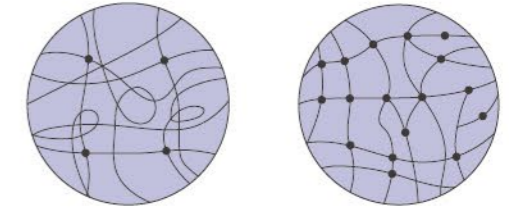
Tooth moulds digitally available  
Posteriors available in 33°, 20° and 28°  
Large mould selection with Square, Ovoid, and Tapering

### Rich options to meet individuality

- 14×upper anterior moulds:  
S1, S2, S3, S4, T2, T3, T4, T5, T6, O1, O3, O4, SS3, SS4
- 11×lower anterior moulds:  
L2, L3, L4, L5, L6, L7, L8, L9, L10, L12, L13
- 16×posterior moulds:  
30MU, 30ML, 32MU, 32ML, 34MU, 34ML, 30SU, 30SL, 32SU, 32SL, 229U, 229L, 231U, 231L, 233U, 233L
- 16 A-D shades

### Enhanced quality

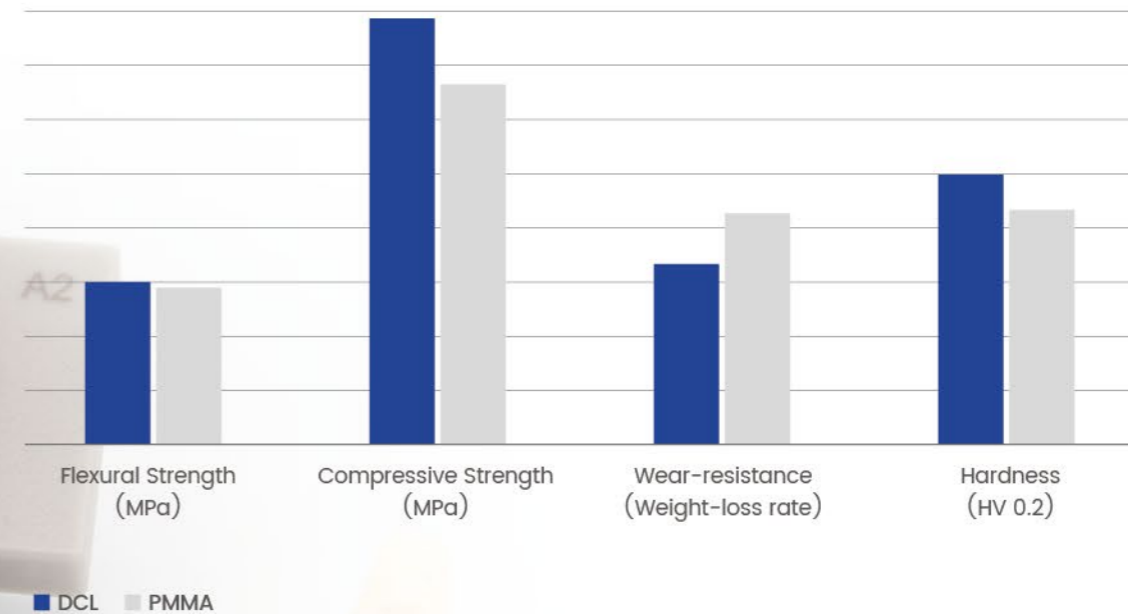
PMMA anterior moulds and DCL posterior moulds  
Minimum water absorption and better wear-resistance  
Uneasy to be out of shape and colored after processed  
Multiple thermal press molding technology



PMMA Polymer

DCL Polymer

Performance of DCL Material<sup>[1]</sup>



### SPEC

- Anterior: 6×16/Box (6pcs/card, 16 cards/box)
- Posterior: 8×12/Box (8pcs/card, 12 cards/box)
- Full set: 28×1/Box (1 full set)
- 28×1×4/Box (4 sets/box)

[1]: Test Report, HUGE Dental Official Laboratory, 2024



**Two-Layer PMMA Teeth**

Cost-effective teeth with decades of clinical experience.

**Applications**

Making removable full or partial denture

**Must-see features**

Two layer outlook and multiple moulds  
Labeling patent technology without wax, convenient to use  
Reasonable price and good quality  
Over 30-year experience in clinical use

**Functional description**

New moulds 30S and 32S with preformed holes  
Large mould selection ,high individuality

**Moulds and shades**

- 9xupper anterior moulds: T2, T4, T6, T8, T10, S2, S4, S6, S8
- 5xlower anterior moulds: L2, L4, L6, L8, L10
- 12xposterior moulds: 30U, 30L, 30SU, 30SL, 32U, 32L, 32SU, 32SL, 34U, 34L, 36MU, 36ML
- 16 A-D classical shades
- 6 Bleach shades
- Shade customization available

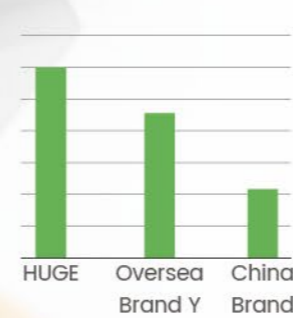
**Foundation of great performance**

Made from high-quality PMMA material added with cross-linking agents  
Minimum water absorption and better wear-resistance  
Uneasy coloring and anti-aging ability  
Clinical proven quality  
Multiple thermal press molding technology

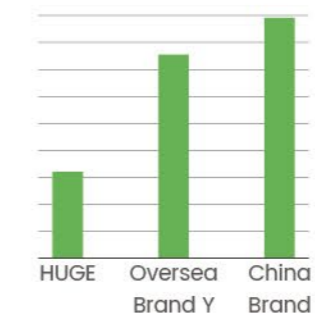


**Physical Property<sup>[1]</sup>**

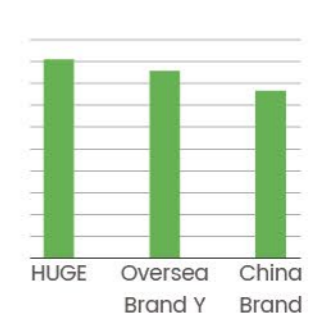
Vickers Hardness/HV0.2



Staining Test/ $\Delta E$



Bonding Strength/N



**SPEC**

- Anterior: 6x1x16/Box (6pcs/card, 16 cards/box)
- Posterior: 8x1x12/Box (8pcs/card, 12 cards/box)
- Full set: 28x1/Box (1 full set)
- 28x1x4/Box (4 sets/box)

[1]: Test Report, HUGE Dental Official Laboratory, 2024

## Two-Layer Double Cross Linked Teeth

Special teeth line of only posterior teeth including LOP\*, 10° and 0° posteriors and can be combined with anteriors from other series.

### Applications

Making removable full or partial denture



\*LOP refers to Long-Centric Occlusal Pattern design by Prof. Jun XU, which can be applied to patients with severe resorption of alveolar bone and very flat alveolar ridge. It can significantly improve the retention of complete denture and realization of masticatory efficiency.

### Functional design

Simple to finalize the occlusion  
 Easy to adjust the occlusion  
 Comfortable wearing & low revisiting rate  
 Protect the alveolar ridge effectively; improve patients' life quality

### Application range

Flat residual ridge; sever alveolar bone resorption  
 Wide mismatch in the mandibular arch relationship; the unilateral anti-jaw is over 10 mm.  
 Maxillo-Mandibular Relationship is not stable and even cannot be identified.  
 All lining mucosa transforming appears in the stress-bearing area.  
 All patients who are suitable for anatomical occlusion.  
 Complete implant covers complete denture repairing.

### Occlusal Adjustment Methods

- For centric occlusion, adjust the cusp not fossa. Three contact points on one side is fine, but with four points is best.
- For protrusive occlusion, adjust fossa incline not the tooth cusp, it can be only one contact point on both sides of the posterior.
- For lateral occlusion, adjust fossa wall not cusp. It is ok when two contact points of both working side and balancing side respectively make contact.



Centric occlusion  
(left side)



One cusp & one slope  
on the working side of  
Lateral Occlusion



Centric occlusion  
(right side)



One cusp & one slope  
on the balancing side  
of Lateral Occlusion

### Multiple solutions

- 6×LOP posterior moulds: 28MU, 28ML, 30MU, 30ML, 32U, 32L
- 6×0° posterior moulds: 029U, 029L, 031U, 031L, 033U, 033L
- 6×10° posterior moulds: 130U, 130L, 132U, 132L, 134U, 134L

### SPEC

- Posterior: 8×1×12/Box (8pcs/card, 12 cards/box)



# DENTURE BASE POLYMERS



# Fast Heat Curing Type

## 20-min

fast curing saves your time and energy!

### Unbreakable

No fracture appears when testing sample be free to fall to the ground for 3 times at 2m height

### Shrink-resistant

Good stability after curing ensures the accuracy of duplicates

### No Bubbles

High qualified rate of finished products with no obvious bubbles

### Natural and lifelike

Addition of bionic veined pigment achieves a natural and lifelike appearance

### High quality raw material

- The main raw material is high-quality PMMA resin powder with high-molecular weight and very small particle size
- The features above deliver high strength, fine texture and excellent performance of the material



Technical specifications	
Dough time	15 minutes
Working time	10 minutes
Curing time	20 minutes at 100°C
Mixing ratio	1ml: 2.4 g powder

### Flexural strength (Mpa)<sup>[1]</sup>



[1] : Test Report, HUGE Dental Official Laboratory, 2022

# Traditional Heat Curing Type

## Stable quality

delivers satisfactory final results!

- Pliable texture
- Abundant shade options
- Shrink-resistant
- Natural aesthetics

Technical specifications	
Dough time	15 minutes
Working time	10 minutes
Curing time	90 minutes
Mixing ratio	1ml liquid: 2.34g powder



# Self/Cold Curing Type

## No heating required

types brings elevated efficiency.

- No heating required
- No bubbles
- Natural and lifelike
- Time-saving operation
- Various shades targeting individual cases



Technical specifications	
Dough time	15 minutes
Working time	10 minutes
Curing time	16-20 minutes
Mixing ratio	1ml liquid (monomer): 2.2 g powder (polymer)

### Storage

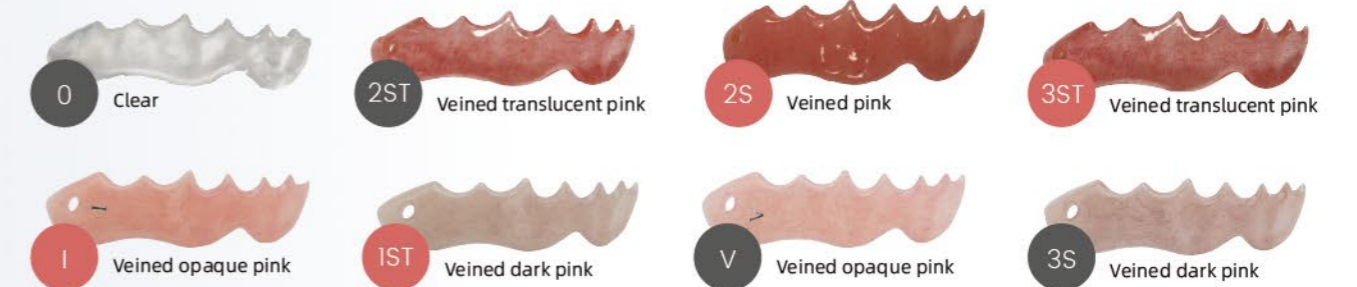
- Store the product in the ventilated area and avoid fire, high temperature and direct sunlight.
- Shelf life: powder: 3 years, liquid: 2 years

### Powder

- 100g/bag, 10bags/box
- 1000g/can
- Liquid: 500ml/bottle



### Shade



# DUPLICATION SILICONES



**GumEasy™**

A-Silicone for Gingival Mask

Artificial gum silicone with both elastic and rigid types

# Dental Implant Solution

Your workflow with **GumEasy™ A-Silicone for Gingival Mask**

HUGE is committed to creating the perfect implant restoration results, with a complete range of materials from clinical products to laboratory materials. HUGE provides you with high-quality, innovative and cost-effective dental implant solutions that can meet all your aesthetic needs. It's highly recommended to reproduce gingival morphology on models in implant applications for improving the accuracy of implantation.

## We promise to bring:

- Precise impression results ✓
- Comfortable prosthesis ✓
- Long-lasting and aesthetic restoration ✓

### Impression Taking

**01** PERFIT Impression Silicone & Light Curing Tray

### Model Fabrication

**02** A-Silicone for Gingival Mask

### Temporary Restoration

**03** HUGE Multilayer PMMA BLOCK

### Final Restoration

**04** HUGE Zirconia BLOCKS

### Bonding System

**05** HUGE Dental Restorative Materials



# GumEasy™

## A-Silicone for Gingival Mask

Artificial gum silicone with both elastic and rigid types

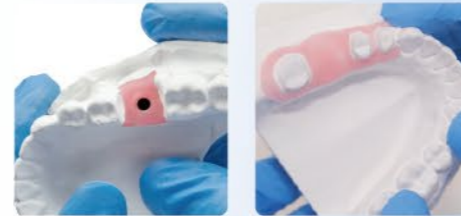
### Main Usage Scenario

Applied to implant restoration process  
Applied to crown and bridge restoration process



### Advantages

- Precise detail reproduction
- High mechanical strength
- Excellent esthetic results
- Compatible with various techniques (direct and indirect)
- Hard type is suitable for CAD/CAM process





### Technical Data

Product	Mixing ratio (Base: Catalyst)	Working time* (min:s)	Setting time* (min:s)	Hardness (Shore A)
A-Silicone for Gingival Mask (Hard Type)	1:1	1:30	10:00	70
A-Silicone for Gingival Mask (Soft Type)	1:1	1:30	10:00	40

\* The times mentioned above are intended from the start of the mixing phase at 23°C(73°F).

### Packaging

Types	Description
Standard	 (2x50ml)
Elite kit	 (2x50ml+12 mixing tips+12 intraoral tips+1*10ml separator)

### Types recommended in different application scenarios

Product type	Recommended in the presence of undercuts	Recommended in the presence of implants
A-Silicone for Gingival Mask (Hard Type)	+	++
A-Silicone for Gingival Mask (Soft Type)	++	+

+ recommended    ++ highly recommended

Shore A **40&70**  
Available, Scannable





### Main Usage Scenario

- Duplicating complete or partial denture models
- Making temporary prosthetic works
- Creating artificial gingiva on the model
- Matrix for esthetic veneer restoration



### Advantages




- Easy mixing ratio 1:1
- High detail replication
- Reliable dimensional stability over time
- Resistant to high temperature

### Technical Dat

Mixing ratio	Mixing time*	Total working time*	Setting time*	Hardness	Color
1:1	30s	1 min 30s	8 min	Shore A 85/Shore A 90	Blue/Light Blue

\* The specified times may vary depending on the operating temperature and technique.

### Packaging

Types	Description
Standard tub	 ( 5kg tub Base+ 5kg tub Catalyst )
Standard can	 ( 450g can Base + 450g can Catalyst )
Sample can	 ( 50g can Base + 50g can Catalyst )

# Alph@lab™

## C-Silicone for Laboratory

Condensation-cure kneading silicone for precise duplication of models



### Main Usage Scenario

- Duplicating complete or partial denture models
- Making temporary prosthetic works
- Creating artificial gingiva on the model
- Matrix for esthetic veneer restoration



### Advantages




- Excellent dimensional stability
- Precise detail reproduction
- Available in diverse hardness: Shore A 85 and Shore A 90

### Technical Data

Mixing time*	Total working time*	Setting time*	Hardness	Color
30s	2 min	7 min	Shore A 85/Shore A 90	Gray Pink

\* The specified times may vary depending on the operating temperature and technique.

### Packaging

Types	Description
Standard big tub	 (10kg tub Base+ 5*40g tube Catalyst )
Standard medium tub	 (5kg tub Base + 2*40g tube Catalyst)
Sample can	 (50g can Base + 3g tube Catalyst)



# Alph@lab™

Tear Strength  
**6.5kN/m**

LIGHT CURRING TRAY & UNIT



# Light Curing Tray

Well-performed custom material meets your individual needs.

## Applications

Making individual trays  
Making temporary base plates

## Variants



Shades available: pink, blue  
Thickness available: 2.3mm, 2.0mm

## Satisfactory performance

- Easy operation and fast setting
- High flexural strength and hardness
- Stable in shape during delivery
- Low deformation rate, hard to displace in mouth

## Packaging



# Light Curing Unit

Highly efficient light cure machine for setting Light Curing Tray.

## Features

High polymerization capacity  
Low maintenance

## Technical data

- Light wave: 395nm
- Voltage available: 110V, 220V
- Timers available: 180s and 30 min

## Packaging



Flexural Strength  
**> 110MPa**